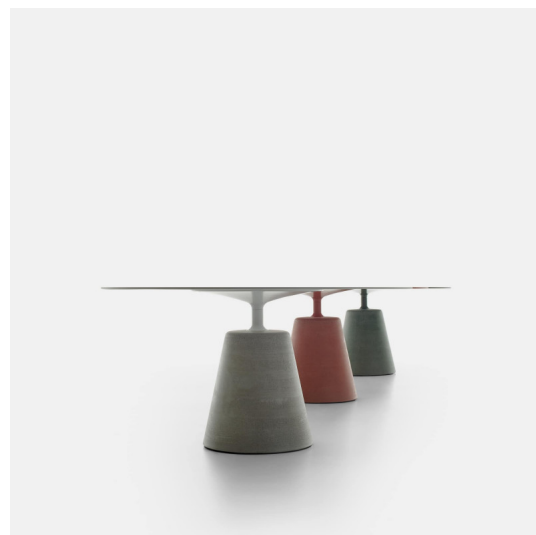


# mdf italia



© COPYRIGHT 2024 MDF ITALIA SRL SOCIETA' UNIPERSONALE

2014-2022

## ROCK TABLE

Designed by Jean Marie Massaud

The iconic Rock Table, with its fluid and elegant silhouette, fits with great personality into a variety of outdoor settings, residential or public: gardens, terraces, dehors. In the new oval version, Rock Table becomes the perfect set for large outdoor gatherings, hosting up to 12 people.

The natural, anthracite and stone-chip cement finishes inspired by the colours of nature create an atmosphere of harmony with the surrounding environment.

[DISCOVER THE INDOOR VERSION](#)

## DIMENSIONS

- . narrow single base (with outer dimension of 34 cm at floor level) with 80 and 100 cm large tabletops;
- . single wide base (with outer dimension of 50 cm at floor level) with 120 and 140 cm large tabletops;
- . double wide base (with outer dimension of 50 cm at floor level) with oval tops of 250 and 300 cm large.

please note: the height of H72 has a dimensional tolerance of +/- 1 cm. Variations are to be considered, especially for tables with concrete tops.

## TABLETOP FINISHES

### CEMENT

In white or anthracite UHPFRC cement (ultra high performance, fibre reinforced cement), with high technical / structural characteristics. Tops: 80, 100, 120, 140, 250 e 300 cm.

### STONE CHIP CEMENT

In UHPFRC cement (ultra high performance, fibre reinforced cement), with high technical / structural characteristics, coloured in mass using natural oxides, enhanced with a stone chi surface made up of Alpine rocks and stones (white and green stone chip top), or stone chip made up of stones from Tuscany (terracotta top). Tops: 80, 100, 120, 140, 250 e 300 cm.

# MONOCHROME COMBINATIONS

## WHITE VERSION

Base in natural cement, matt white tube and flange, white stone chip cement or white cement top.

## ANTHRACITE VERSION

Base in anthracite cement, matt anthracite tube and flange, anthracite cement top.

## ORANGE VERSION

Base in terracotta cement, matt orange tube and flange, terracotta stone chip cement top.

## GREEN VERSION

Base in green cement, matt green tube and flange, green stone chip cement top.

# ACCESSORIES

Protective rain cover specifically for outdoor products, waterproof, made of 100% polyester, outside with acrylic coating, inside with acrylic resin coating. Its characteristics are emphasised by its fully fungicidal Teflon finish. Each rain cover comes with a closable bag, so that it can be folded and kept correctly when not in use.

# INDOOR USE

All Rock Table version can be used in indoor ambience.

The following tops can only be used in indoors ambience:

## LACQUERED

Medium density wood fibre panel, 25 mm thick, machined on the edge, and painted matt white or matt graphite grey. Tops: 80, 100, 120, 140 cm.

## GLASS

Smoked tempered glass, 12 mm thick (tops: 120, 140 cm).

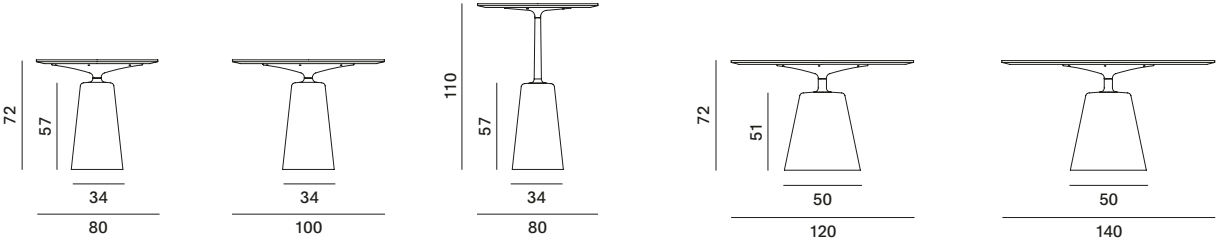
Rock Table



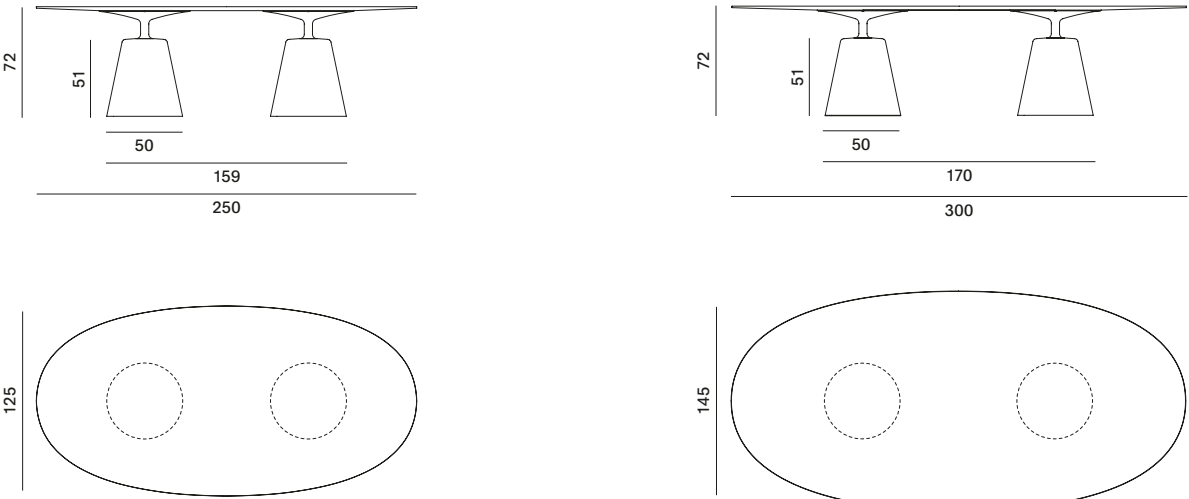
The height of H72 has a dimensional tolerance of  $\pm$  cm. Variations are to be considered, especially for tables with cement tops.

Round tables with narrow base

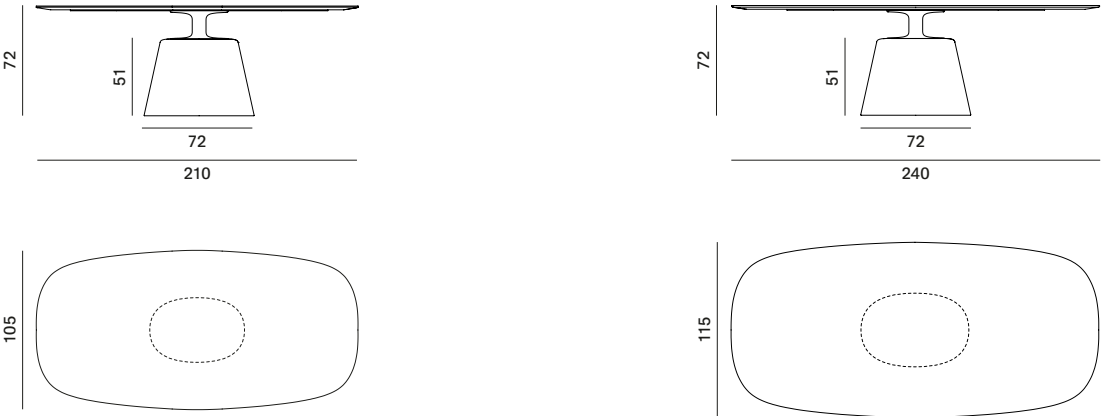
Round tables with wide base



Oval tables with double base



Maxi table



# Finishing

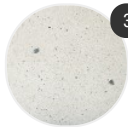
The number in the dot corresponds to the number of colour/material finish.

Here below, in the section FINISH OPTIONS, please note all the colours of the materials used for this product.

## TABLE

---

### Top



Stone chip cement



Cement

---

### Structure



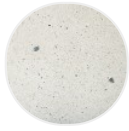
Cement

# Finish options

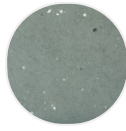
## TOP

---

### Stone chip cement



White stone  
chip cement



Green stone  
chip cement

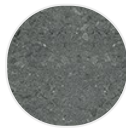


Terracotta  
stone chip  
cement

### Cement



White cement



Anthracite  
cement

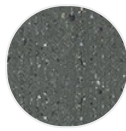
## STRUCTURE

---

### Cement



Cement  
natural X080



Cement  
anthracite  
X081



Cement green



Cement  
terracotta