

# mdf italia



© COPYRIGHT 2024 MDF ITALIA SRL SOCIETA' UNIPERSONALE

2005-2017

## RANDOM COLLECTION

Designed by Neuland Industriedesign

A timeless icon of the MDF Italia collection, Random has revolutionised the bookcase concept by transforming a functional container into a design sculpture. A product that gives rhythm to space thanks to the irregular structure of the shelves, only 6 mm thick, played out in different heights, designed to house not only books, but also objects that tell the story and personality of each individual.

Over the years Random has evolved by expanding the family with the 2C-3C, Random Box and Cabinet versions, meeting the most diverse market and usage requirements. The collection offers great compositional freedom, allowing the various modules and finishes available to be combined to create almost infinite configurations characterised by great lightness.

[DOWNLOAD THE NEW CATALOGUES >](#)

### RANDOM 2C, 3C, 5C

A bookcase made of 6 mm thick medium-density wood fibreboards, with matt lacquer (micro-goffered) in white or medium grey, and back of melamine-coated board (thickness 10 mm). The modules, with 2 and 3 spans, can be used alone or combined with the 5C model to allow greater flexibility and improve the modularity of the entire collection. The 2C and 3C module are available with matt lacquer in white, light grey, medium grey, powder pink, medium olive green and medium powder blue. Compartments in standard sizes. The shelves are fit into the backs through concealed dovetail slots. With adjustable feet to 15 mm.

- . Random 5C (5 spans) height 217, length 81.6, depth 25 cm
- . Random 3C (3 spans) height 217, length 46.4, depth 25 cm.
- . Random 2C (2 spans) height 217, length 35.8, depth 25 cm.

## RANDOM BOX

A bookcase with compartments closed by doors made of medium-density wood fibreboards with matt lacquer (micro-goffered) white; uprights and shelves in thickness 6 mm; doors in thickness 12 mm. The back is made from white melamine-coated board (thickness 10mm). Open compartments, or closed by doors in standard size, and one drawer compartment. The large dims of the compartments and the new depth of 35 cm allow a functional use of the available space. The fixed shelves are fit into the backs through concealed dovetail slots. Dims: Height 217 cm and length 81.6 cm. Depth 35 cm.

## RANDOM CABINET

A storage unit made of medium-density wood fibreboards, with matt lacquer in white (micro-goffered). Uprights, shelves and doors in thickness 12 mm. The back is made with white melamine-coated board (thickness 10 mm). Compartments closed by doors in standard size. Inner adjustable shelvings. The large dimensions of the compartments and the depth of 35 cm allow a functional use of the available space. By flanking more units, also with Random Box or Random, large-sized configurations of strong impact can be created. The single unit can always be turned upside down. Height 217, length 81.6, depth 35 cm.

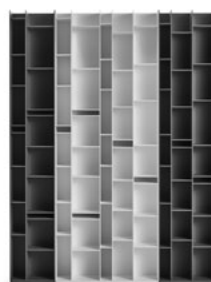
# Random 2C - 3C - 5C

Random 5C L81.6 - D25 - H217  
 Random 2C L35.8 - D25 - H217  
 Random 3C L46.4 - D25 - H217

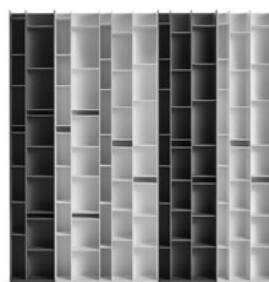
Module 2C L35.8		Module 3C L46.4		Random 5C L81.6	
120×60	90×105	120×60	90×105	120×60	90×105
120×283	220×125	120×283	220×125	120×283	220×125
120×239	220×327	120×239	220×327	120×239	220×327
120×310	220×320	120×310	220×320	120×310	220×320
120×260	220×240	120×260	220×240	120×260	220×240
120×279	220×230	120×279	220×230	120×279	220×230
120×250	220×280	120×250	220×280	120×250	220×280
120×356	220×236	120×356	220×236	120×356	220×236
120×239	220×327	120×239	220×327	120×239	220×327
120×310	220×320	120×310	220×320	120×310	220×320
120×260	220×240	120×260	220×240	120×260	220×240
120×279	220×230	120×279	220×230	120×279	220×230
120×250	220×280	120×250	220×280	120×250	220×280
120×356	220×236	120×356	220×236	120×356	220×236
120×239	220×327	120×239	220×327	120×239	220×327
120×310	220×320	120×310	220×320	120×310	220×320
120×260	220×240	120×260	220×240	120×260	220×240
120×279	220×230	120×279	220×230	120×279	220×230
120×250	220×280	120×250	220×280	120×250	220×280
120×356	220×236	120×356	220×236	120×356	220×236

## Examples of compositions

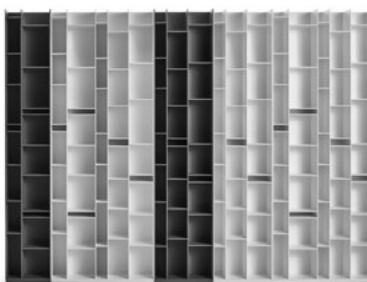
2C + RANDOM 5C + 3C = L163.8 D25 H217



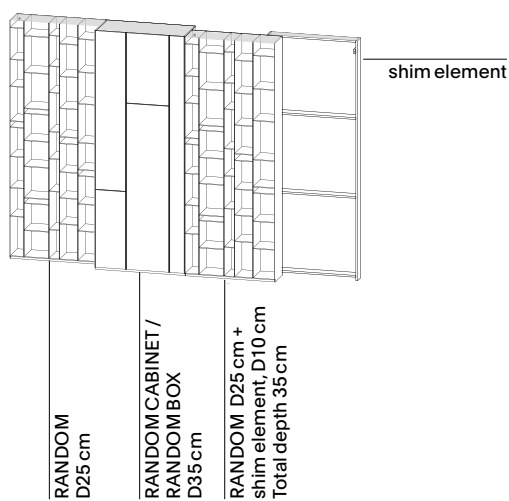
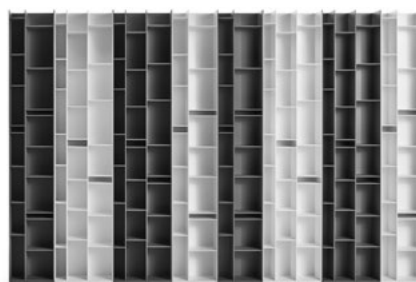
2C + RANDOM 5C + 2×3C = L210.2 D25 H217



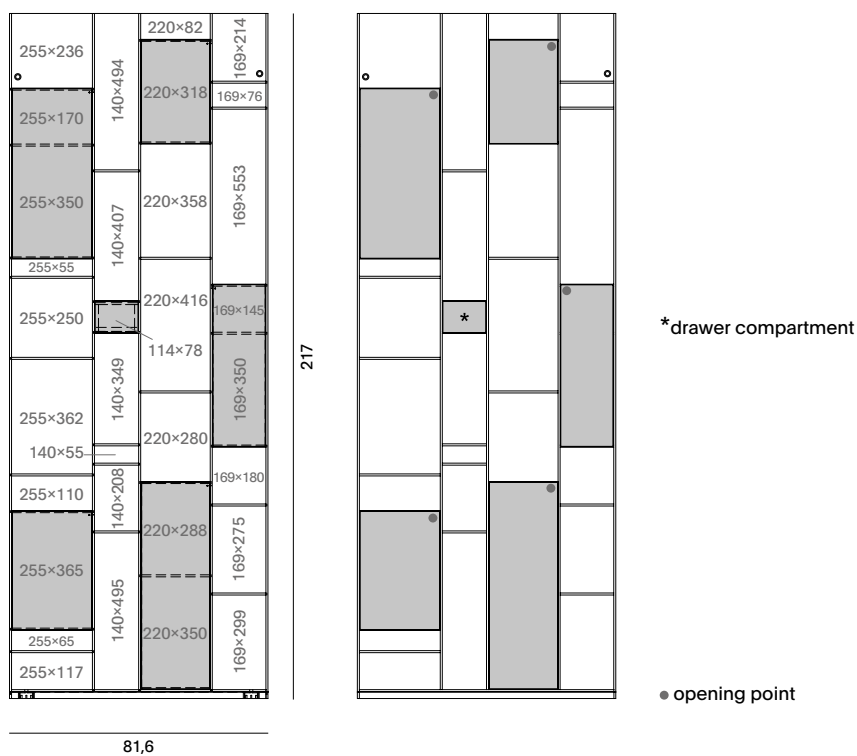
2C + RANDOM 5C + 2×3C + RANDOM 5C = L291.8 D25 H217



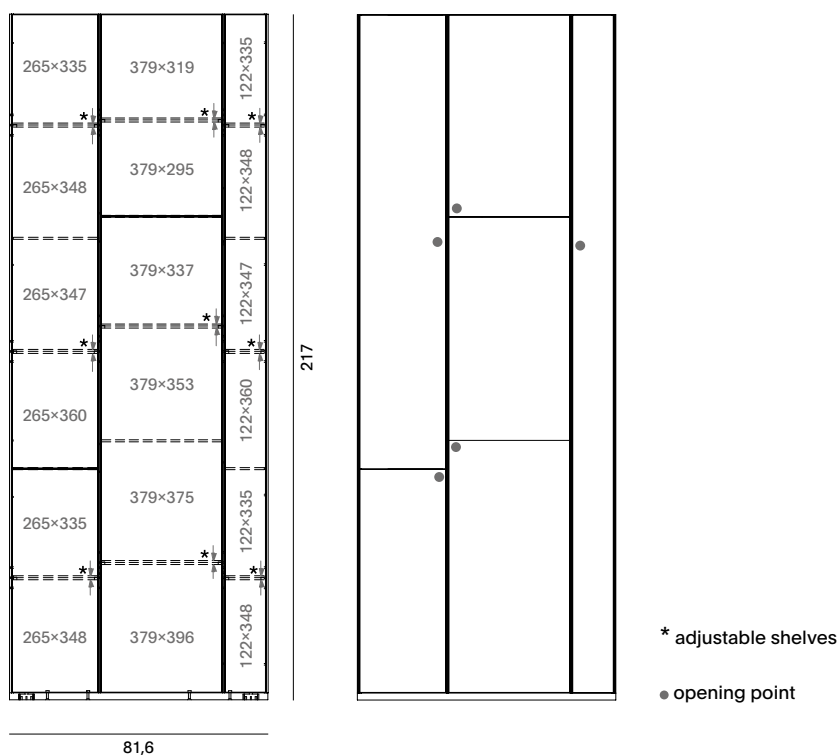
2C + 2×3C + 2×2C + 2×3C + 2C = L328.8 D25 H217



## Random Box



## Random Cabinet



# Finishing

The number in the dot corresponds to the number of colour/material finish.

Here below, in the section FINISH OPTIONS, please note all the colours of the materials used for this product.

## RANDOM 2C, 3C

---

### Structure

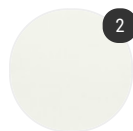


Matt lacquered

## RANDOM 5C

---

### Structure



Monochromatic

## RANDOM BOX, RANDOM CABINET

---

### Structure



Matt lacquered

# Finish options

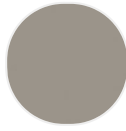
## STRUCTURE

---

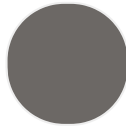
### Matt lacquered



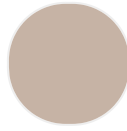
Matt  
lacquered  
white X042



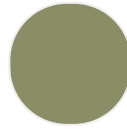
Matt  
lacquered light  
grey



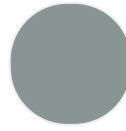
Matt  
lacquered  
medium grey  
X093



Matt  
lacquered  
powder pink



Matt  
lacquered  
medium olive  
green

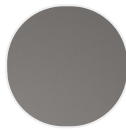


Matt  
lacquered  
medium  
powder blue

### Monochromatic



Matt  
lacquered  
white X042



Matt  
lacquered  
medium grey  
X093

### Matt lacquered



Matt  
lacquered  
white X042